



SOUND SPECS BIG HALL

Stage Size: 6m x 5m x 0,80m | clearance to rig: 3m

all venue power is 230v/50Hz on standard austrian 'schuko' plugs
FOH is on ground level

FOH:

- 1 allen&heath dLive CDM48 Mixrack (48in/24out)
- 1 allen&heath dLive C3500 Surface with DANTE64 option card

PA & MONITORING:

- 2 d&b V10p Tops (flown)
- 4 d&b V-Subs (unterneath the stage)
- 2 d&b 10S-D Delayline (flown)
- 1 Amprack (d&b 40D, 10D)
- 4 PL-Audio M15 CX PRO wedges
- 2 EV ZLX15 active fullrange speaker

MICROPHONES & DIs

Shure, Sennheiser, AKG, Audix, EV, rode, BSS, radial...

STANDS:

- 8 k&m mic stand tall w/ boom
- 4 k&m mic stand short w/boom
- 2 speaker stands

2trk & DJ

- 1 allen&heath Xone92 DJ-mixer
- 2 Technics 1210 MK7 turntables



LIGHT SPECS BIG HALL

Stage Size: 6m x 5m x 0,80m | clearance to rig: 3m

- 1 PULSAR Dimmer 48kW – 30 ch (12x5A, 18x10A)
- 1 Dimmer 6ch (6x 10A)

- 1 High End Road Hog 4
- 1 MA Lightcommander 24/6 (Optional)
- 1 Chamsys MagicQ ShuttlePC + PC Wing (Optional)

- 40 PAR 64 1000 W
- 4 PAR 64 FLOORPAR Shortnose
- 6 ETC Source4 JR 25°-50°
- 2 ACL Par36
- 4 2-lite Blinder DWE
- 4 GLP Volkslicht RGB (13ch)
- 6 LDDE Scroller für Par64

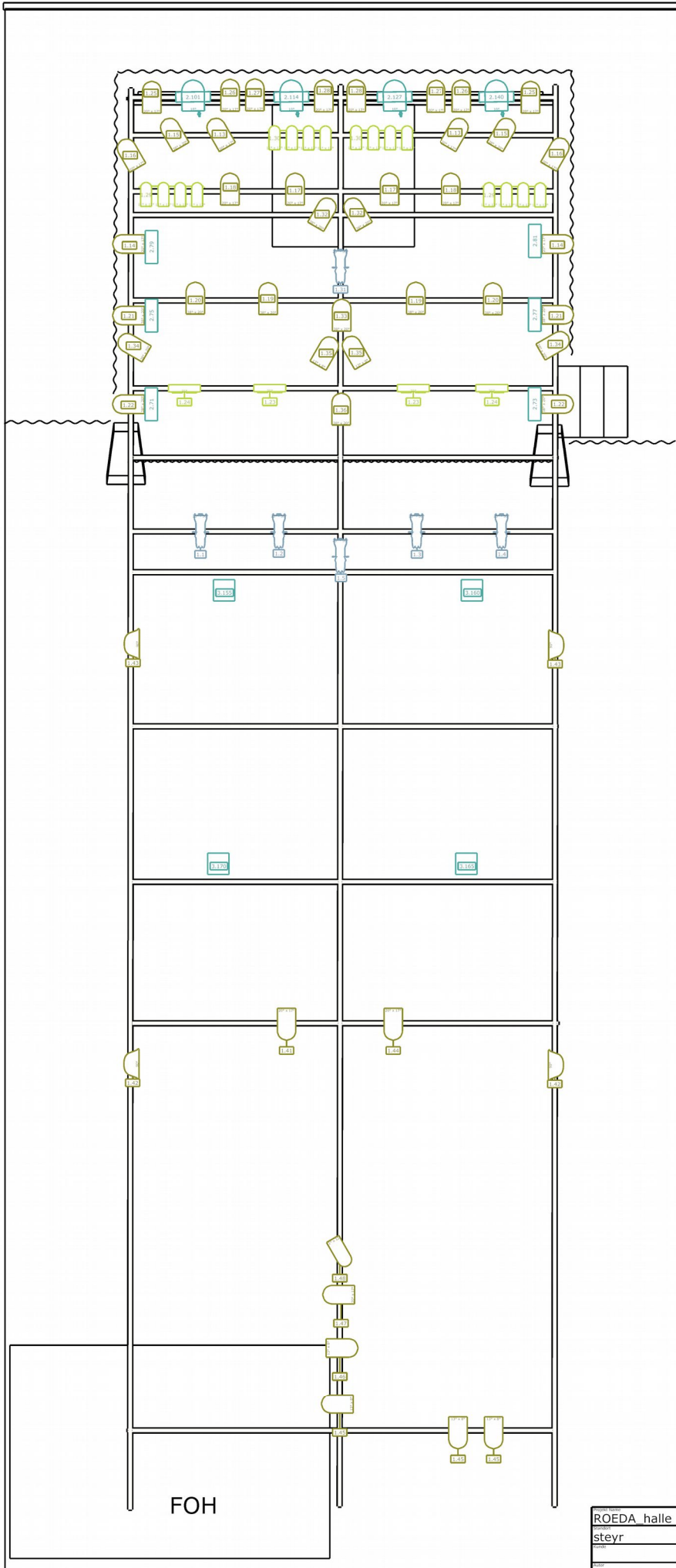
- 1 Smoke Factory TourHazer II
- 2 Stairville 1,5kW DMX Strobe
- 4 High End Dataflash AF1000, Xenon Strobe

- 4 Pinspots
- 1 Mirrorball 30cm
- 1 Mirrorball 50cm

Stage: 6 x 5 x 0,8m
 Clearance to Rig: 3m
 opt. Riser: h: 0,4m

hall: 22 x 9,4 x 4m

- 1 PULSAR Dimmer 48kW - 30ch (12 x 5A, 18 x 10A)
- 1 Dimmer 6ch (6 x 10A)
- 1 High End Road Hog4
- 1 Chamsys MagicQ Shuttle PC + PC Wing
- 1 MA Lightcommander 24/6



key

- Par 64, 1kW (42)
- ACL Par 36 (2)
- LDDE Scroller, 2ch (6)
- Source Four Jr Zoom 25°-50° (6)
- 2-Light DWE (4)
- Asymmetric 1kW (4)
- GLP Volkslicht RGB, 13ch (4)
- OPTIONAL: High End Dataflash AF 1000 Strobe (4)
- Cameo Sunbeam, 5ch (4)
- OPTIONAL: Stairville 1,5kW DMX Strobe (2)
- Smoke Factory Tour-Hazer II, 2ch (1)
- OPTIONAL: FLOOR Par 64 short (4)
- OPTIONAL: Mirrorball 30cm + Pinspots

FOH

ROEDA halle			
steyr	02.06.2021		
pac.	v.01	roeda_2021-06-02	ball



SOUND SPECS SMALL HALL

Stage Size: 5m x 2,5m x 0,60m

FOH:

- 1 allen&heath GLD 112
- 1 allen&heath AR2412 & AR84 (32in/16out)

PA:

- 2 EAW KF650 (flown)
 - 2 EAW SB250
- Amprack for EAW PA: all Lab.Gruppen w/ EAW MX300i crossover

MONITORING:

- 4 LD Stinger 12 1 4ch Amplifier

MICROPHONES & DIS

as needed - please see specs from 'big hall' above

STANDS & CLAMPS

as needed - please see specs from 'big hall' above

LIGHT SPECS SMALL HALL

Stage Size: 5m x 2,5m x 0,60m

- 1 Botex SDC 24ch DMX desk
- 4 STAIRVILLE Led Par 64 MKII RGBW
- 12 ETC Par 575
- 1 6ch Dimmer
- 1 Mirrorball 30cm
- 1 Pinspot